

METAL MAN

Operating Instructions and Parts Manual

UWC3HD

Please read and save these instructions. Read through this owner's manual carefully before using product. Protect yourself and others by observing all safety information, warnings, and cautions. Failure to comply with instructions could result in personal injury and/or damage to product or property. Please retain instructions for future reference.

UWC3HD

Description

The Metal Man Heavy Duty Welding Cart is designed for easy maneuvering of your welder and large cylinder (up to 10 in. diameter). The supplied cylinder chain helps keep your cylinder secure. The large top shelf is 12-1/2 in. x 19-1/2 in. and accommodates most brands of all-in-one wire welders. This unique cart features a fold down handle for easier access to your welder controls. Once in place, lock the front casters to keep it put. Prevent weld cable damage and eliminate tripping hazards by wrapping your cables around the side cable wraps.



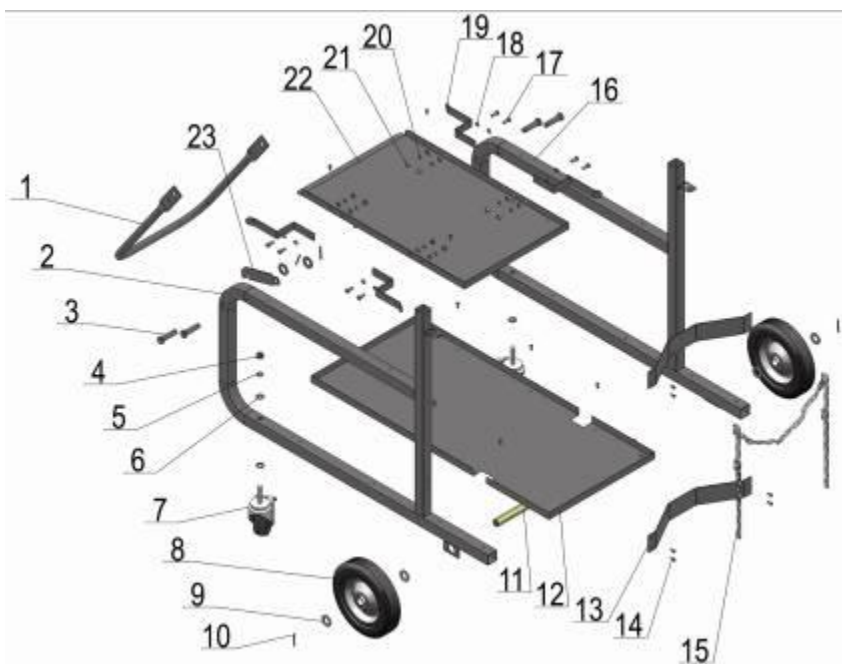
Specifications

Item	Specification
Packing Dimension (LXWXH) inch	36.5" x 27" x 3.7"
Product Dimension (LXWXH) inch	43" x 19.5" x 29"
Packing weight	46 lbs
Net weight	43 lbs

Assembly

1. Assemble bottom panel to frame 1 and frame 2 using the supplied sheet metal screws (#14).
2. Slide front caster through the hole in the frame and the hole in the bottom panel. Secure with supplied hardware (#4, 5, 6). Repeat for each side.
3. Slide axle (#11) through mounting clips on both frame 1 and frame 2.
4. Slide flat washer (#9) onto axle, then slide rubber wheel (#8) onto axle. Add another flat washer and then secure with the cotter pin (#10). Repeat for each side.
5. Secure top panel on frames using supplied sheet metal screws (#14)
6. Secure cylinder supports (#13) to frames using supplied sheet metal screws (#14).
7. Use slotted holes in frame to tighten securement chain (#15) to fit bottle used.
8. Secure cable holders (#19) to top panel using supplied hardware (#17, 18, 20, 21).
9. Slide one cylindrical pin (#3) in large hole in frame just under the top panel. Then slide one latch (#23) onto pin with cut out groove facing down toward floor. Add one flat washer (#9) and secure with cotter pin (#10). Repeat for each side.
10. Line up hole in handle (#1) with hole in frame at the front of frame. Then slide one cylindrical pin (#3) through the hole in the frame and the handle. Add a flat washer (#9) and secure with cotter pin (#10). Repeat for each side.

UWC3HD



UWC3HD

Spare Parts List

Reference number	Description	Part number	Qty
1	Handle	1.1.01.05.2939	1
2	Frame 1	1.1.01.05.2962	1
3	Cylindrical pin	2.06.26.137	4
4	Hexagon nut M12	2.06.14.007	2
5	Spring washer 12	2.06.18.007	2
6	Flat washer 12	2.06.17.007	8
7	Caster	2.05.07.831	2
8	Rubber wheel	2.05.07.102	1
9	Flat washer 20	2.06.17.010	8
10	Cotter Pin	2.06.21.001	6
11	Axle	1.1.01.05.2938	1
12	Bottom panel	1.1.01.05.2897	1
13	Cylinder Support	1.1.01.05.2899	1
14	Sheet Metal Screw	2.06.03.006	20
15	Chain	1.1.12.54.0002	2
16	Frame 2	1.1.01.05.2898	1
17	Cross bolt M6	2.06.08.039	8
18	Flat washer 6	2.06.17.004	16
19	Hanger	2.01.41.020	4
20	Spring washer 6	2.06.18.004	8
21	Nut M6	2.06.14.004	8
22	Top panel	1.1.01.05.2462	1
23	Latch	1.1.01.05.2464	2